



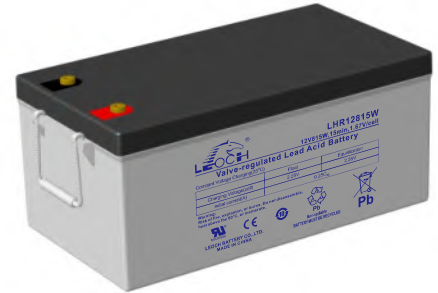
LHR Series-High Rate

LHR12815W(12V815W)

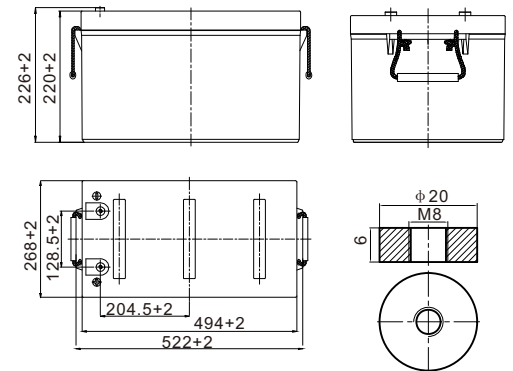


Specifications

Rated Voltage	12V		
Nominal Rate($W_{15}, 1.67V/cell$)	815W/cell		
Nominal Capacity($C_{10}, 1.80V/cell$)	230Ah		
Dimension	Length	522±2mm (20.6 inches)	
	Width	268±2mm (10.6 inches)	
	Container Height	220±2mm (8.66 inches)	
	Total Height	226±2mm (8.90 inches)	
Approx Weight	74.1kg (163.4 lbs)		
Terminal	M8		
Container Material	ABS: UL 94 HB or V-0		
Rated Capacity(25°C)	230.0 Ah	C10(23.0A, 1.80V/cell)	
	213.6 Ah	C8(26.7A, 1.80V/cell)	
	202.5 Ah	C5(40.5A, 1.75V/cell)	
	197.1 Ah	C3(59.7A, 1.75V/cell)	
	146.4 Ah	C1(146.4A, 1.60V/cell)	
Max. Discharge Current	2300A (5s)		
Internal Resistance(25°C)	Approx 2.5mΩ		
Operating Temp. Range	Discharge	-20 ~ 55°C (-4 ~ 131°F)	
	Charge	-20 ~ 40°C (-4 ~ 104°F)	
	Storage	-15 ~ 50°C (5 ~ 122°F)	
Nominal Operating Temp. Range	25±3°C (77±5°F)		
Max.Charging Current(25°C)	57.5A		
Charge voltage(25°C)	Float	Charge voltage	Temp. Coefficient
	Equalization		
Effect of temp. to Capacity	40°C (104°F)	106%	
	25°C (77°F)	100%	
	0°C (32°F)	86%	
Self Discharge	≤3%/month @ 25°C		



Layout



Constant Current Discharge (Amperes) at 25 °C (77°F)

F.V/Time	5min	10min	15min	20min	30min	45min	1h	1.5h	2h	3h	4h	5h	8h	10h
1.85V/cell	490.5	391.6	339.5	267.0	188.4	140.9	126.6	93.0	76.0	56.6	44.8	37.9	26.2	22.4
1.80V/cell	557.9	444.5	384.8	301.9	212.4	150.5	130.8	95.8	80.5	58.5	46.4	39.4	26.7	23.0
1.75V/cell	605.9	482.1	416.5	325.9	228.5	157.5	136.2	99.7	83.6	59.7	48.0	40.5	27.0	23.1
1.70V/cell	647.8	514.0	442.4	345.6	242.2	163.1	142.2	103.9	85.6	61.1	49.1	41.4	27.4	23.2
1.67V/cell	670.4	530.3	455.3	355.0	248.0	171.2	143.7	106.6	87.6	62.4	49.8	42.0	27.7	23.6
1.60V/cell	694.1	548.4	469.4	364.1	254.0	180.7	146.4	110.2	89.3	64.0	50.9	42.8	27.8	23.7

Constant Power Discharge (Watts/cell) at 25 °C (77°F)

F.V/Time	5min	10min	15min	20min	30min	45min	1h	1.5h	2h	3h	4h	5h	8h	10h
1.85V/cell	916.1	736.7	642.9	507.9	360.0	270.8	244.8	180.2	147.9	110.6	87.8	74.6	51.9	44.5
1.80V/cell	1024.8	824.1	719.1	568.1	402.7	287.5	251.7	184.6	155.8	113.8	90.7	77.2	52.9	45.7
1.75V/cell	1093.7	879.6	767.5	606.3	429.8	299.0	260.9	191.4	161.1	115.9	93.4	79.2	53.2	45.8
1.70V/cell	1149.8	924.7	806.9	637.4	451.9	307.5	270.8	198.4	164.3	118.0	95.3	80.7	54.0	46.1
1.67V/cell	1168.5	939.7	815.0	647.8	459.2	321.0	272.3	202.6	167.5	120.0	96.2	81.5	54.5	46.7
1.60V/cell	1184.9	952.9	831.5	656.9	465.6	335.7	275.3	208.0	169.7	122.4	98.0	82.7	54.7	46.9



LHR Series-High Rate

LHR12815W(12V815W)



Applications

- UPS
- Hospitals & Testing Laboratories
- Emergency Power Supply
- Banks & Financial Markets
- Industrial Process Control Facilities
- Data & Network Operation Centers

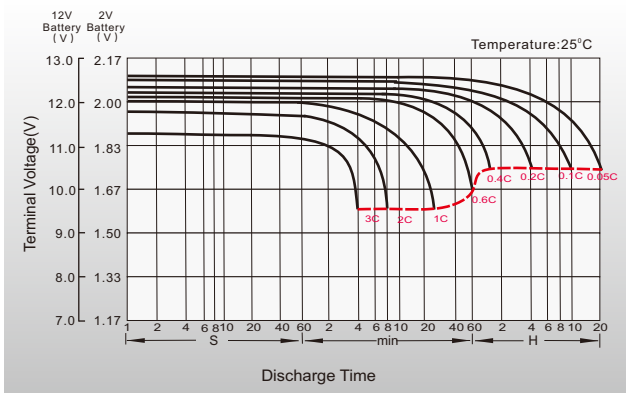
General Features

- High quality AGM separator: extend cycle life and prevent micro short circuit
- PbCaSn alloy for plate grids: less gassing, less self-discharging
- Unique vent valve design: reduce water losing and prevent air/spark going inside

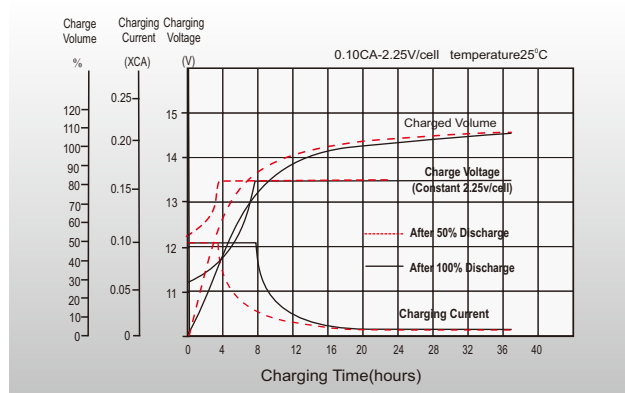
Standards

- Compliance with IEC 60896 standards
- Classified as "Long Life" according to Eurobat
- CE, UL, IEC Certified
- Manufactured in Leoch@IATF 16949, ISO 45001, ISO 9001 and ISO 14001 certified production facilities

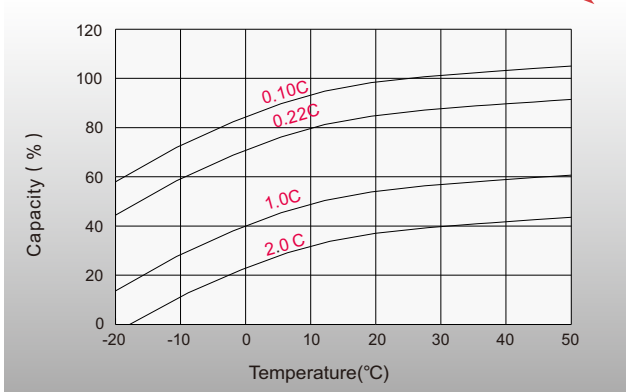
Discharge Characteristics



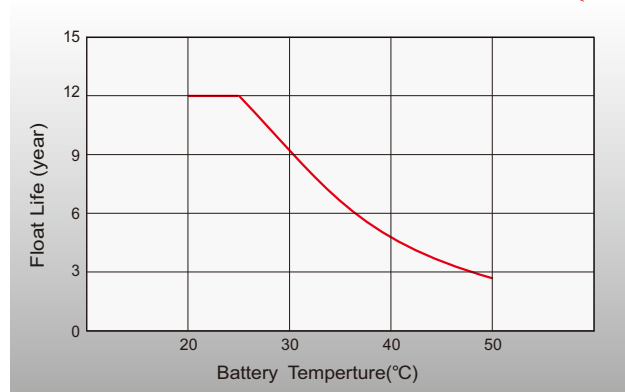
Float Charging Characteristics



Temperature Effects in Relation to Battery Capacity



Effect of Temperature on Long Term Float Life



distributed by: Power Storage Deutschland GmbH

+49 (0)6081 96582-0

info@psd-power.de

www.psd-power.de



[Http://www.leoch.com](http://www.leoch.com)

© 2023 LEOCH. All rights reserved.
 Trademarks and logos are the property of LEOCH and its affiliates unless otherwise noted.
 Subject to revisions without prior notice E&OE.

Publication No.: LB-LHR12815W-PD-EN-V1.3-202304