



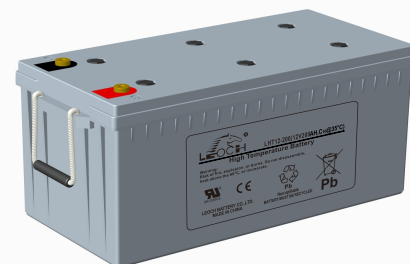
# LHT Series-High Temperature

## LHT12-200(12V200Ah)

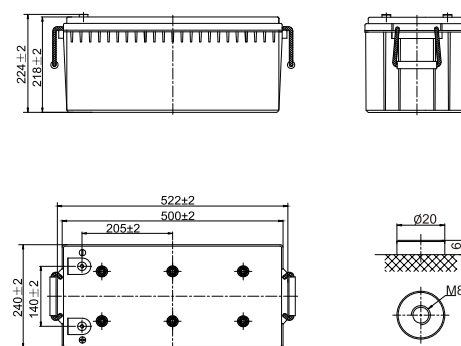


### Specifications

Rated Voltage	12V	
Nominal Capacity	200Ah	(C <sub>10</sub> , 1.80V/cell)
Dimension	Length	522±2mm (20.55 inches)
	Width	240±2mm (9.44 inches)
	Container Height	218±2mm (8.58 inches)
	Total Height	224±2mm (8.82 inches)
Approx Weight	67.4 Kg (148.6 lbs)	
Terminal	M8	
Container Material	PC-ABS flame retardant jar and cover to UL94 V-0	
Rated Capacity (35°C)	214.0 Ah	(20hr, 10.7A, 1.80V/cell)
	200.0 Ah	(10hr, 20.0A, 1.80V/cell)
	174.0 Ah	(5hr, 34.8A, 1.75V/cell)
	156.0 Ah	(3hr, 52.0A, 1.75V/cell)
	124.0 Ah	(1hr, 124.0A, 1.60V/cell)
Max. Discharge Current	2000A	
Internal Resistance (35°C)	Approx 6.0mΩ	
Operating Temp. Range	Discharge	-40 ~ 65°C (-40 ~ 149°F)
	Charge	-20 ~ 45°C (-4 ~ 113°F)
	Storage	-20 ~ 50°C (-4 ~ 122°F)
Nominal Operating Temp. Range	25±10°C (77±18°F)	
Cycle Use	Initial Charging Current less than 50A. Voltage 13.8V~14.4V at 35°C(95°F)Temp. Coefficient -30mV/°C	
	Standby Use	
Effect of temp. to Capacity	Initial Charging Current less than 50A. Voltage 13.2V~13.62V at 35°C(95°F)Temp. Coefficient -18mV/°C	
	40°C (104°F)	103%
	35°C (95°F)	100%
Self Discharge	0°C (32°F)	79%
	LHT series batteries may be stored for up to 9 months at 35°C(95°F) and then a freshening charge is required. For higher temperatures the time interval will be shorter.	



### Layout



### Constant Current Discharge (Amperes) at 35 °C (95°F)

F.V/Time	10min	15min	20min	30min	45min	1h	2h	3h	4h	5h	6h	8h	10h	20h
1.85V/cell	234.0	196.8	174.6	144.8	111.7	95.6	61.9	46.5	38.1	32.1	28.1	22.5	19.4	10.3
1.80V/cell	267.8	221.0	193.0	157.3	120.5	100.9	66.5	50.0	40.5	34.0	29.8	23.7	20.0	10.7
1.75V/cell	304.1	249.1	213.3	170.9	131.5	110.0	69.2	52.0	41.9	34.8	30.7	24.5	20.5	11.0
1.70V/cell	343.5	276.3	235.5	186.6	141.6	116.4	72.9	54.7	43.8	36.8	32.2	25.6	21.3	11.3
1.67V/cell	368.8	295.9	250.5	196.9	149.9	120.4	75.6	56.9	45.5	38.0	33.3	26.4	21.9	11.6
1.60V/cell	405.8	324.1	272.1	210.1	155.7	124.0	77.5	58.4	46.5	38.9	34.0	26.9	22.4	11.8

### Constant Power Discharge(Watts/cell) at 35 °C (95°F)

F.V/Time	10min	15min	20min	30min	45min	1h	2h	3h	4h	5h	6h	8h	10h	20h
1.85V/cell	436.9	371.2	332.6	278.9	217.0	186.3	121.4	91.7	75.3	63.5	55.8	45.0	38.7	20.7
1.80V/cell	494.1	411.2	362.4	298.3	232.3	195.6	129.7	97.9	79.6	67.0	58.9	47.2	39.9	21.4
1.75V/cell	552.3	457.9	396.7	321.5	251.0	212.3	134.4	101.4	82.1	68.4	60.6	48.6	40.9	21.9
1.70V/cell	609.8	501.0	434.6	349.1	269.3	223.9	141.3	106.6	85.6	72.2	63.4	50.6	42.5	22.4
1.67V/cell	648.9	532.3	458.9	365.4	282.5	230.0	145.6	110.4	88.6	74.2	65.4	52.2	43.6	23.1
1.60V/cell	697.8	573.5	493.2	387.2	292.0	235.6	148.6	112.7	90.3	75.8	66.5	53.0	44.4	23.4



# LHT Series-High Temperature

## LHT12-200(12V200Ah)



### Applications

- Tele-communication base station
- High temperature station without air-condition
- Station in the open air
- Electric power system, UPS
- Solar energy, wind saving energy power supply

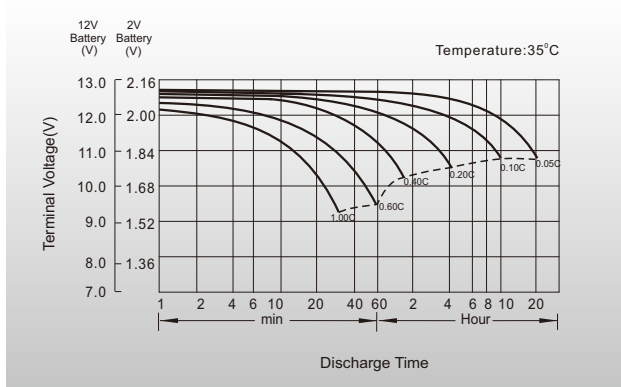
### General Features

- Battery design life up to 10 years at 35°C
- Special anti-high-temperature paste formula
- Special anti-high-temperature container
- Special double sealing and anti-high-temperature sealing agent
- High performance separator and special electrolyte formula

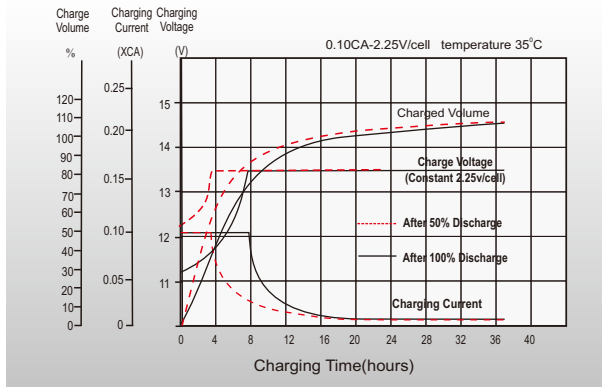
### Standards

- Classified as "Long Life" according to Eurobat
- UL, CE Certified
- Manufactured in Leoch® IATF 16949, ISO 9001, ISO 14001 and ISO 45001 certified production facilities

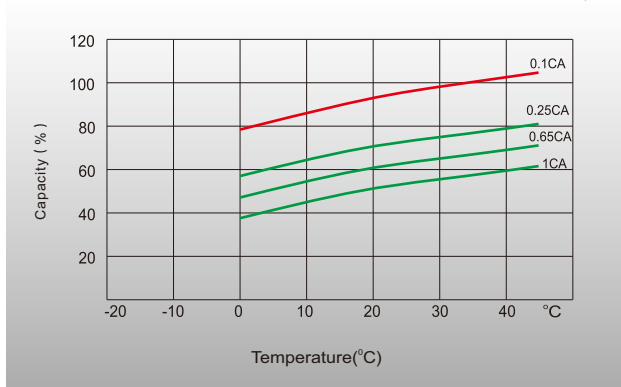
### Discharge Characteristics



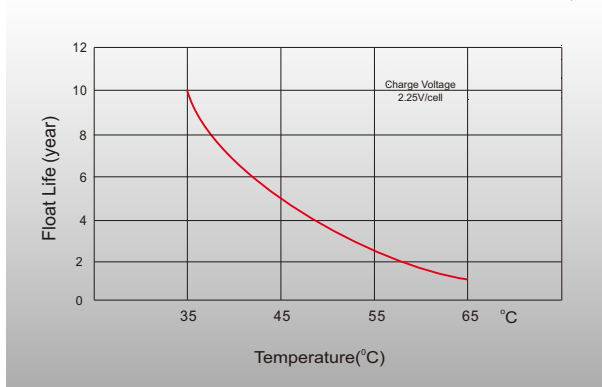
### Float Charging Characteristics



### Temperature Effects in Relation to Battery Capacity



### Effect of Temperature on Long Term Float Life



distributed by: Power Storage Deutschland GmbH

+49 (0)6081 96582-0

info@psd-power.de



www.psd-power.de



[Http://www.leoch.com](http://www.leoch.com)

© 2022 LEOCH. All rights reserved.  
 Trademarks and logos are the property of LEOCH and its affiliates unless otherwise noted.  
 Subject to revisions without prior notice.

Publication No.: LB-LHT12-200-PD-EN-V2.3-202209