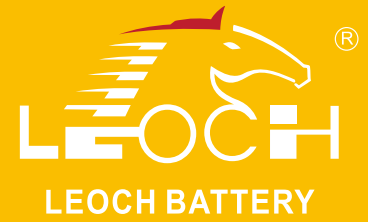




LPL Series-Long Life Standby LPL12-200(12V200Ah)

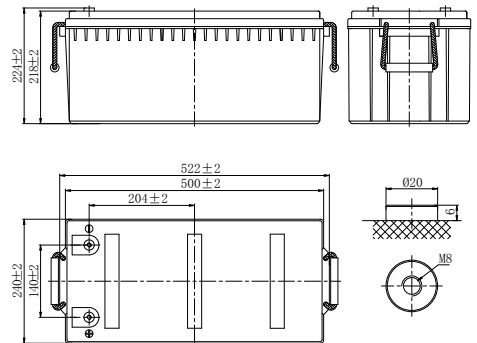


Specifications

Rated Voltage	12V	
Nominal Capacity	C ₁₀ , 1.80V/cell	200Ah
Dimension	Length	522±2mm (20.6 inches)
	Width	240±2mm (9.45 inches)
	Container Height	218±2mm (8.58 inches)
	Total Height	224±2mm (8.81 inches)
Approx Weight	62.3kg (137.3 lbs)	
Terminal	M8	
Container Material	ABS	
Rated Capacity(25°C)	210.0 Ah	C20(10.5A, 1.80V/cell)
	200.0 Ah	C10(20.0A, 1.80V/cell)
	169.5 Ah	C5(33.9A, 1.75V/cell)
	154.2 Ah	C3(51.4A, 1.75V/cell)
	116.2 Ah	C1(116.2A, 1.60V/cell)
Max. Discharge Current	2000A (5s)	
Internal Resistance(25°C)	Approx 3.2mΩ	
Operating Temp. Range	Discharge	-15 ~ 50°C (5 ~ 122°F)
	Charge	-20 ~ 40°C (-4 ~ 104°F)
	Storage	-15 ~ 40°C (5 ~ 104°F)
Nominal Operating Temp. Range	25±3°C (77±5°F)	
Cycle Use	Initial Charging Current less than 60 A. Voltage 14.4V~15.0V at 25°C(77°F)Temp. Coefficient -30mV/°C	
Standby Use	Initial Charging Current less than 60 A. Voltage 13.5V~13.8V at 25°C(77°F)Temp. Coefficient -20mV/°C	
Effect of temp. to Capacity	40°C (104°F)	103%
	25°C (77°F)	100%
	0°C (32°F)	86%
Self Discharge	LPL series batteries may be stored for up to 6 months at 25°C(77°F) and then a freshening charge is required. For higher temperatures the time interval will be shorter.	



Layout



Constant Current Discharge (Amperes) at 25°C (77°F)

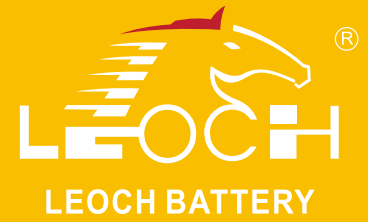
F.V/Time	5min	10min	15min	30min	45min	1h	1.5h	2h	3h	4h	5h	6h	8h	10h	20h
1.85V/cell	395.3	281.1	243.7	157.7	117.8	101.8	75.3	63.3	46.4	36.4	31.6	27.9	21.4	19.1	10.1
1.80V/cell	449.6	319.1	276.2	171.7	124.8	105.5	77.9	65.4	50.4	38.9	33.3	29.9	22.6	20.0	10.5
1.75V/cell	488.3	346.0	299.0	175.2	129.3	110.7	81.9	68.8	51.4	39.6	33.9	30.2	22.7	20.2	10.6
1.70V/cell	522.1	368.9	317.6	178.7	131.9	112.9	83.5	70.2	52.4	40.3	34.4	30.3	23.0	20.4	10.7
1.65V/cell	540.3	380.6	326.8	181.3	133.8	114.6	84.7	71.2	52.9	40.9	35.1	30.5	23.3	20.7	10.8
1.60V/cell	559.4	393.6	337.0	183.9	135.7	116.2	85.9	72.3	53.4	41.4	35.6	30.7	23.6	20.9	11.0

Constant Power Discharge (Watts/cell) at 25°C (77°F)

F.V/Time	5min	10min	15min	30min	45min	1h	1.5h	2h	3h	4h	5h	6h	8h	10h	20h
1.85V/cell	738.3	528.8	461.4	301.3	226.4	197.0	146.1	123.2	90.8	71.5	62.3	55.1	42.5	38.0	20.2
1.80V/cell	825.9	591.5	516.2	325.5	238.3	202.9	150.3	126.6	98.0	76.0	65.2	58.9	44.6	39.7	20.9
1.75V/cell	881.4	631.3	550.9	329.6	245.5	212.0	157.3	132.7	99.7	77.2	66.2	59.2	44.7	40.1	21.1
1.70V/cell	926.6	663.7	579.1	333.4	248.6	215.1	159.7	134.8	101.2	78.2	67.1	59.4	45.4	40.4	21.3
1.65V/cell	941.7	674.5	588.6	335.7	250.9	217.0	161.2	136.2	101.8	79.2	68.2	59.5	45.9	40.9	21.5
1.60V/cell	954.9	683.9	596.8	337.2	252.1	218.6	162.5	137.3	102.2	79.7	68.9	59.8	46.4	41.3	21.7



LPL Series-Long Life Standby LPL12-200(12V200Ah)



Applications

- UPS and EPS
- Emergency light
- Railway signal and aircraft signal system
- Marine and power stations
- Alarm and security system
- Electronic apparatus and equipment
- Communication power supply, DC power supply

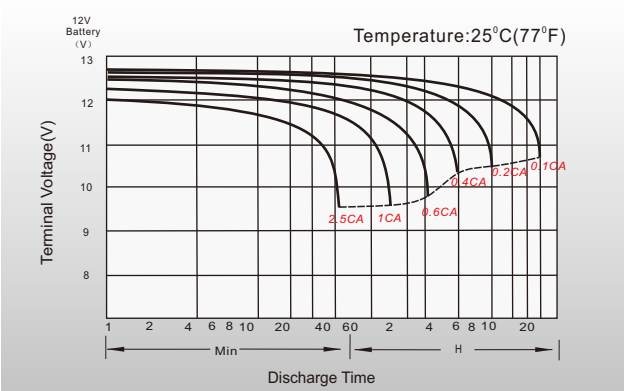
General Features

- 12 years design life (25°C)
- Grid refining technology and the thicker plates are used to extend the battery standby life and reduce the plate grid corrosion speed
- Using oxygen recombination technology: maintenance-free
- Unique vent valve design: control water losing, prevent air and spark going inside

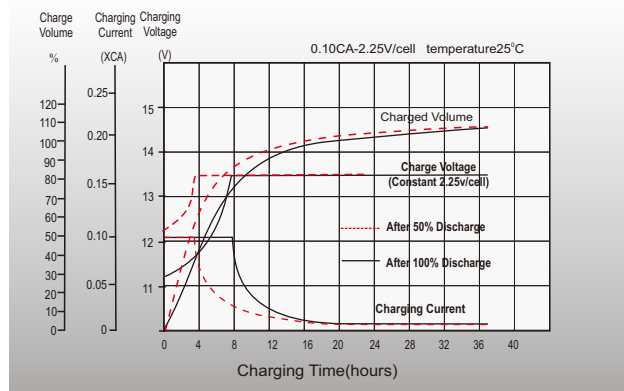
Standards

- Compliance with IEC 60896 standards, EU Battery Directive
- UL, CE Certified
- Manufactured in Leoch@IATF16949, ISO 45001, ISO 9001 and ISO 14001 certified production facilities

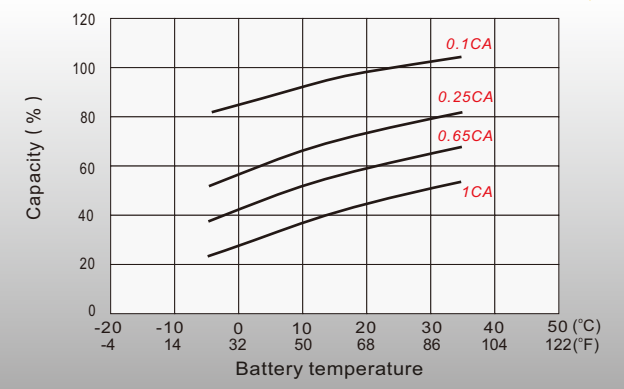
Discharge Characteristics



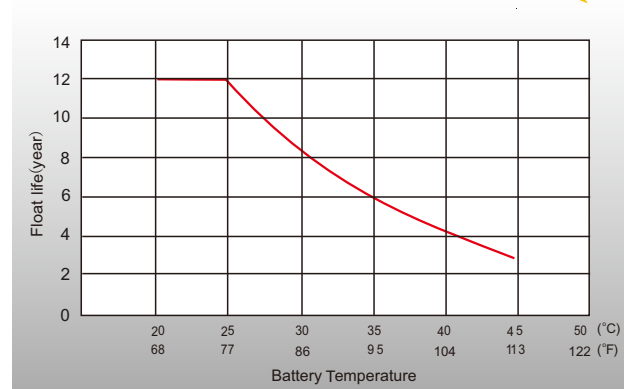
Float Charging Characteristics



Temperature Effects in Relation to Battery Capacity



Effect of Temperature on Long Term Float Life



distributed by: Power Storage Deutschland GmbH

+49 (0)6081 96582-0

info@psd-power.de



www.psd-power.de



[Http://www.leoch.com](http://www.leoch.com)

© 1999-2023 LEOCH. All rights reserved.
Trademarks and logos are the property of LEOCH and its affiliates unless otherwise noted.
Subject to revisions without prior notice E&OE.

Publication No.: LB-LPL12-200-PD-EN-V3.0-202302