



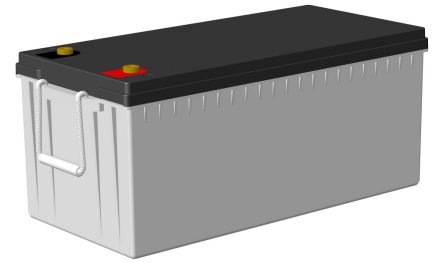
XP Series-Ultra High Rate

XP12-740(12V740W)

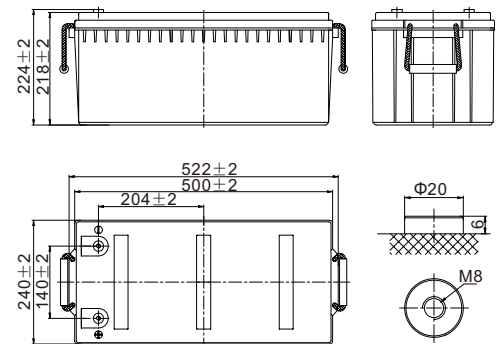


Specifications

Rated Voltage	12V		
Nominal Rate(W_{15} , 1.67V/cell)	740W		
Nominal Capacity(C_{10} , 1.80V/cell)	210Ah		
Dimension	Length	522±2mm (20.6 inches)	
	Width	240±2mm (9.45 inches)	
	Container Height	218±2mm (8.58 inches)	
	Total Height	224±2mm (8.82 inches)	
Approx Weight	64.5kg (142.2 lbs)		
Terminal	M8		
Container Material	ABS: UL 94 HB or V-0 optional		
Rated Capacity(25°C)	210.0 Ah	C10(21.0A, 1.80V/cell)	
	195.2 Ah	C8(24.4A, 1.80V/cell)	
	185.0 Ah	C5(37.0A, 1.75V/cell)	
	163.5 Ah	C3(54.5A, 1.75V/cell)	
	133.6 Ah	C1(133.6A, 1.60V/cell)	
Max. Discharge Current	2100A (5s)		
Internal Resistance(25°C)	Approx 2.6mΩ		
Operating Temp. Range	Discharge	-20 ~ 55°C (-4 ~ 131°F)	
	Charge	-20 ~ 40°C (-4 ~ 104°F)	
	Storage	-15 ~ 50°C (5 ~ 122°F)	
Nominal Operating Temp. Range	25±3°C (77±5°F)		
Max.Charging Current(25°C)	52.5A		
Charge voltage(25°C)	Float	Charge voltage	Temp. Coefficient
	Equalization	2.25 ~ 2.30V/cell	-3mV/cell/°C
Effect of temp. to Capacity	40°C (104°F)	2.30~2.40V/cell	-4mV/cell/°C
	25°C (77°F)		
	0°C (32°F)		
Self Discharge	≤3%/month @ 25°C		



Layout



Constant Current Discharge (Amperes) at 25 °C (77°F)

F.V/Time	5min	10min	15min	20min	30min	45min	1h	1.5h	2h	3h	4h	5h	8h	10h
1.85V/cell	448.7	358.2	310.6	244.2	172.3	128.6	115.6	84.9	69.4	51.7	40.9	34.6	23.9	20.4
1.80V/cell	510.2	406.6	351.9	276.1	194.3	137.5	119.5	87.4	73.5	53.4	42.4	35.9	24.4	21.0
1.75V/cell	554.2	440.9	381.0	298.1	209.0	143.8	124.4	91.0	76.3	54.5	43.8	37.0	24.6	21.1
1.70V/cell	592.5	470.1	404.6	316.1	221.5	148.9	129.8	94.8	78.1	55.7	44.8	37.8	25.0	21.2
1.67V/cell	613.2	485.0	416.4	324.7	226.8	156.3	131.2	97.3	80.0	57.0	45.4	38.3	25.3	21.6
1.60V/cell	634.9	501.6	429.4	333.0	232.3	165.0	133.6	100.6	81.6	58.4	46.5	39.1	25.4	21.7

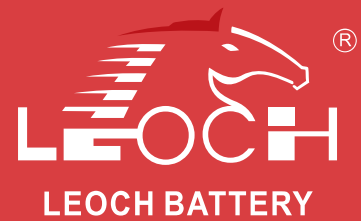
Constant Power Discharge (Watts/cell) at 25 °C (77°F)

F.V/Time	5min	10min	15min	20min	30min	45min	1h	1.5h	2h	3h	4h	5h	8h	10h
1.85V/cell	837.9	673.8	588.0	464.5	329.3	247.3	223.6	164.5	135.0	101.0	80.2	68.1	47.4	40.6
1.80V/cell	937.3	753.8	657.8	519.6	368.3	262.5	229.8	168.6	142.2	103.9	82.8	70.5	48.3	41.7
1.75V/cell	1000.4	804.5	702.0	554.6	393.1	273.0	238.2	174.8	147.1	105.8	85.3	72.3	48.6	41.8
1.70V/cell	1051.7	845.7	738.0	583.0	413.3	280.8	247.3	181.2	150.0	107.7	87.0	73.7	49.3	42.1
1.67V/cell	1068.8	859.5	740.0	592.5	420.0	293.1	248.6	185.0	152.9	109.6	87.8	74.4	49.8	42.7
1.60V/cell	1083.7	871.5	760.5	600.8	425.9	306.5	251.4	189.9	155.0	111.8	89.5	75.5	49.9	42.8



XP Series-Ultra High Rate

XP12-740(12V740W)



Applications

- UPS
- Hospitals & Testing Laboratories
- Emergency Power Supply
- Electric starting
- Telecommunications
- Data Centers

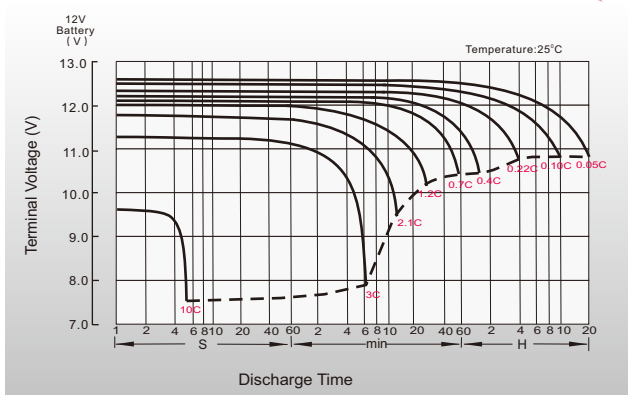
General Features

- Special designed grids for optimized high power density
- Oversized partition intercell welds, providing low resistance connections & minimal power loss
- Advanced lead tin calcium alloy, reduces grid corrosion & promotes long battery life
- Performance excels at high rates of discharge & recharge
- High integrity post seal for long life

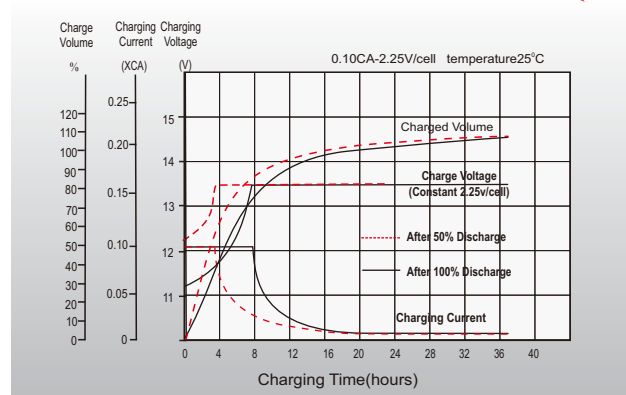
Standards

- Compliance with IEC 60896 standards
- Classified as "Very Long Life" according to Eurobat
- CE, UL Certified
- Manufactured in Leoch®TS16949, OHSAS 18001, ISO 9001 and ISO 14001 certified production facilities

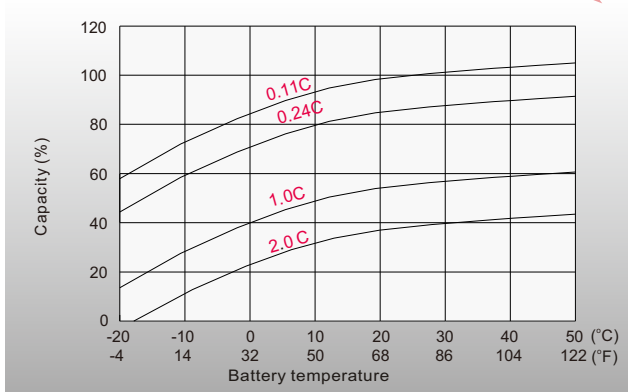
Discharge Characteristics



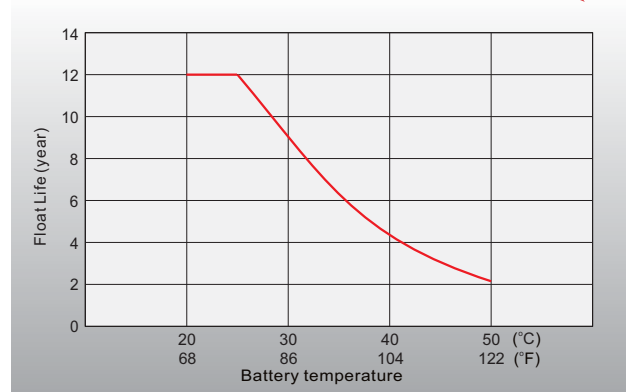
Float Charging Characteristics



Temperature Effects in Relation to Battery Capacity



Effect of Temperature on Long Term Float Life



distributed by: Power Storage Deutschland GmbH

+49 (0)6081 96582-0

info@psd-power.de

www.psd-power.de



[Http://www.leoch.com](http://www.leoch.com)

© 2023 LEOCH. All rights reserved.
Trademarks and logos are the property of LEOCH and its affiliates unless otherwise noted.
Subject to revisions without prior notice E&OE.

Publication No.: LB-XP12-740-PD-EN-V3.1-202303